

1080 Pest Animal Bait

Notification to Neighbours of Vertebrate Pest Control Using 1080

It has been advised that the Department of Environment, Land, Water & Planning (DELWP), will be undertaking a 1080 pest animal poisoning program using buried baits to control wild dogs on public land at:

Amboyne Boundary Tk	Deddick Valley/Tubbut	Gunmark Rd	Bendoc
Amboyne Tk	Deddick Valley	Helens Tk	Bendoc
Armstrong Tk	Deddick Valley	Jacksons Tk	Bendoc/Delegate River
Aspen Battery Tk	Bendoc	Jake Break Rd	Bendoc
Barrys Tk	Bendoc	Little River Tk	Bendoc
Beasleys Rd	Bendoc	Lock Gully Rd	Bendoc
Bendoc-Orbost Rd	Bendoc	Marriot Tk	Bendoc
Border Tk	Delegate River	Meades Tk	Delegate River
Boundary Tk	Bonang/Tubbut	Minchins Tk	Bonang
Bowen Tk	Bonang/DeddickValley	Mustard Tk	Bendoc
Burtens Road	Bendoc	Playgrounds Rd	Bendoc
Bushells Tea Tk	Bendoc	River Tk	Delegate River
Clarkeville Rd	Bendoc	Snowy Tk	Deddick Valley
Cottonwood Range Rd	Bendoc/Delegate River	Steps Tk	Bendoc
Crawfords Rd/Tk	Bendoc	The Fives Rd	Bendoc/Delegate River
Deddick Tk	Deddick Valley	Unnamed Tracks	Bendoc/Delegate River
Delegate Bluff Tk	Delegate River	Warbisco Tk	Bonang
Fork Tk	Bendoc	Yalmy Rd	Bonang

Awareness of 1080 Bait use on Public Land by DELWP is vital for the safe management of domestic animals.

The poison to be used is **Compound 1080 (Sodium Fluoro acetate)** which is contained within an approved bait type for the pest species.

To minimise risk of poisoning to your animals you are advised:

1. Confine, muzzle and/or restrain your domestic animals, particularly dogs and cats, to prevent them from accessing 1080 pest animal poison baits or carcasses.
2. Domestic animals, particularly dogs and cats, are susceptible to primary poisoning from ingesting 1080 pest animal bait products and secondary poisoning from ingesting contaminated animal carcasses. It is unusual for domestic animals to scavenge on dog/fox carcasses.
3. Closely monitor the health and behaviour of your companion animals or livestock. If you notice any unusual or uncharacteristic behaviour contact your local vet immediately.
4. There is a delay in the poison action of 1080 and animals that have ingested 1080 pest animal bait products may die on your property.
5. Collect and destroy any poisoned carcasses you find by burning (in accordance with local regulations) or burying to a depth of at least 50cm for rabbits and at least 1 metre for foxes, wild dogs and feral pigs.
6. Always dispose of carcasses away from natural features such as waterways.

If poisoning occurs contact a doctor or the Poisons Information Centre on 13 11 26

For further information please contact Vaughn Kingston Biosecurity Area Leader—Wild Dogs (Gippsland Region) on 03 5155 8121 or Glen Lineham Acting Biosecurity Area Leader—Wild Dogs (Hume/North East Region) 03 5152 0688.

Bounty Back In..

The Fox & Wild Dog Bounty will resume in March 2015. The DELWP website will be updated soon with the relevant date and times, but in the meantime if you

have any enquiries here are the details for collection sites across Gippsland.

Ellinbank (2pm-4pm)	Yarram (2pm—4pm)
23rd March 2015	25th March 2015
25th May 2015	27th May 2015
Bairnsdale (12pm—2pm)	Woori Yallock (12pm—2pm)
24th March 2015	26th March 2015
26th May 2015	28th May 2015
Maffra (9am—11am)	
25th March 2015	
27th May 2015	

Scalp Collection



Fox Scalp
\$10 each



Dog Scalp
\$100 each

****Please note Yarram & Woori Yallock only accept Fox scalps****

Terms & Conditions of Collecting the Bounty

6.0 Bounty Rewards

- Acceptable entire fox scalps, including both ears, the skin surrounding both eyes and nose, will be rewarded at \$10 each.
- Acceptable wild dog skin pieces, being a single piece of skin and fur running from the snout, incorporating the ears, along the animal's back and including the tail will be rewarded at \$100 each.

For more information or the full set of terms and conditions please go to www.depi.vic.gov.au

Just a thought, if you are put off by the distance to the hand—in centre perhaps you could do what we used to do in Benambra: One person volunteers to take everyone's scalps down. This means not everyone has to make the trek ?

Visiting Staff Profile



Name: Cooma Pathology Outreach Clinic held at Delegate MPS
Currently staffed by Karen.

Services provided: Blood collections and all other pathology collections.

Delegate MPS is fortunate in that this service has been running for the last 6yrs.

When you come to the MPS for this service remember to have your pathology form with you along with your Medicare card. On arrival at the MPS a number system is in place, so grab yourself a number and take a seat, Karen will call your number, numbers must stay within the MPS building.

Also a reminder that fasting means no food or drink from midnight the night before.

Please remember that you may have to wait.

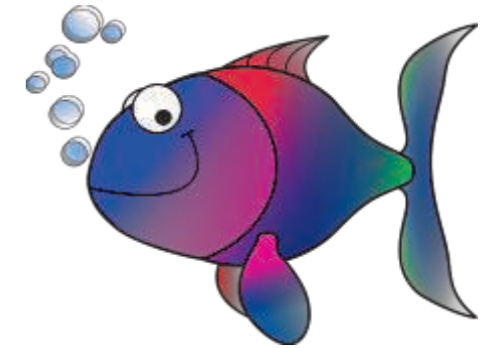
Pathology Clinic times for Delegate MPS

The clinic is run on a Wednesday between 9.30am and 10.30am. Closed public holidays.

Bombala Hospital also has Pathology Clinics.

Delegate River Chinese Tunnel

On Sunday the 12th of April Glen and I decided to take a drive out to see how much water was coming through the tunnel after all the rain we have had; I think the photos say it all!!!! Despite all the water, I took the opportunity to capture some lovely photo 's of the area—it is a must see if you haven 't been down there before - Simone.



SALTWATER COMP
APRIL 17TH & 18TH
HELD
AT MALLACOOTA

BENDOC FISHING CLUB WILL BE HOSTING THERE NEXT SALT WATER FISHING COMP AT MALLACOOTA ON FRIDAY 17TH & SATURDAY 18TH APRIL 2015

THE COMPETITION KICKS OFF ON FRIDAY AT 5 PM WITH WEIGH IN ON SATURDAY AT 5 PM AT *THE BBQ SHED AT THE CARAVAN PARK ON THE WATER FRONT*

PRIZE MONEY FOR SENIORS & JUNIORS

\$ 200 GIFT VOUCHER AT COMPLETE ANGLER MERIMBULA FOR THE BIGGEST BAG OF ESTUARY FISH ONLY, EXCLUDING FLATTIE OVER 55CMS.

\$ 25.00-- CASH FOR SECRET FISH AND BIGGEST FISH.

FLATTIE OVER 55 CMS MUST BE MEASURED AND PHOTOGRAPHED AND DATED THEN RELEASED AS IN VICTORIA YOU ARE NOT ALLOWED TO KEEP A FLATTIE OVER THIS.

HOPE TO SEE YOU THERE!!

FOR ANY MORE INFORMATION PLEASE CONTACT DANNY ON 0407485205

DON'T FORGET TO GRAB A VICTORIAN FISHING LICENCE...
HAPPY FISHING!! 😊

JUST FOR FUN!

HAVE A GIGGLE!

Paddy and his wife are lying in bed and the neighbours dog is barking like mad in the garden. Paddy says, "I've had enough of this!" and storms off.

He comes back five minutes later and his wife asks "What did you do?"

Paddy replies "I've put the dog in our garden. Lets see how they like it!!!!".

Reaching the end of a job interview, The HR Officer asks a young engineer fresh out of University, "And what starting salary are you looking for?" The engineer replies, "In the region of \$125,000 a year, depending on the benefits package." The interviewer enquires, "Well, what would you say to a package of 5 weeks vacation, 14 paid holidays, full medical and dental, company matching retirement fund to 50% of salary, and a company car leased every 2 years?" The engineer sits up straight and says, "Wow! Are you kidding?" The interviewer replies, "Yeah, but you started it."

FOR THE KIDS!



Q. Why was the broom late?
A. Because it over swept!

Q. What did the stamp say to the envelope?
A. Stick with me and we will go places?

Words to Inspire

Wake up every morning with the thought that something wonderful is about to happen!

Household Hint

Store your Clingwrap/Plastic Wrap in the refrigerator. It makes it easier to use and handle. It especially helps in



Savoury & Sweet: Recipe's for the Home Cook



Country Fried Steak

INGREDIENTS

- 4 steaks of your choice, (I used Rump for its flavour)
- Half a box of Kelloggs Cornflakes Crumbs (Available at Delegate General Store)
- 2 eggs whisked
- 1 tablespoon of Garlic Powder
- Salt and Pepper
- Butter and Olive oil to fry with

METHOD

1. Trim steaks of any excess fat and gristle and flatten out slightly with a meat cleaver or your fist!
2. In a large bowl, combine Cornflakes Crumbs, Garlic Powder and salt and pepper to your liking.
3. Dip Steaks in egg and transfer to crumb bowl—making sure they get a good coating of the cornflake mixture.
4. Heat a large pan with equal parts olive oil and butter—this makes a nice liquid to fry in.
5. Place steaks in pan and turn regularly to avoid burning until cooked. (I slip a sharp knife in to see how 'done' the steaks are.)
6. Serve with the vegetables of your choice—we did a sweet potato mash and steamed peas—delish!!!!



Pecan Pie

INGREDIENTS

- 50g unsalted butter, chopped
- 2/3 cup firmly packed brown sugar
- 2/3 cup golden syrup
- 3 eggs, lightly beaten
- 1 tsp vanilla extract
- 2 cups of pecan halves
- Whipped cream, to serve

Shortcut Pastry

- 1 1/3 cups plain flour
- Pinch of salt
- 125g chilled unsalted butter, chopped
- 1 egg lightly beaten

METHOD

1. To make pastry, combine flour and salt in a large bowl. Add butter and, using your fingers, rub into the flour mixture until it resembles fine breadcrumbs. Make a well in the centre of the flour mixture. Combine egg and 1 tablespoon iced water in small bowl, then pour into well. Using a round blade knife, stir until mixture forms a dough.
2. Turn out onto a lightly floured surface and shape into a 2.5cm thick disc. Wrap in plastic wrap and refrigerate for 30 mins.
3. Pre heat oven to 200°C. Place dough on a lightly floured surface and roll out to a 30cm diameter disc. Line pan with dough, then trim and discard excess. Refrigerate for 15 mins.
4. Line pastry with baking paper, fill with uncooked rice and bake for 20 mins or until light golden. Remove beans and paper. Reduce oven to 175°C.
5. Meanwhile, to make filling, place butter, sugar and golden syrup in a small saucepan over medium heat and cook, stirring for five minutes or until butter melts & mixture is smooth. Remove from heat and set aside to cool slightly. Add eggs and vanilla, whisk to combine. Scatter pecans over pastry base and pour over golden syrup mixture. Place on an oven tray and bake for 35 mins or until filling is browned and firm to the touch. Cool in pan to room temperature.
6. Cut pie into wedges and serve with whipped cream or vanilla ice-cream.



Have you tried any of our recipes? If so we would love to see some photos or hear your feedback on how they went!

Anzac Day 2015

Saturday the 25th of April

Gallipoli 100 Years Delegate Service Times

DAWN SERVICE: 6.00AM at the Memorial Gates

MAIN SERVICE: 11.00AM at the Memorial Gates

The march will commence from the Cenotaph at 10.45AM

Note: In the event of rain the services will be moved to the School of The Arts Hall.



Lest We Forget

*"THEY SHALL GROW NOT
OLD
AS WE WHO ARE LEFT
GROW OLD,
AGE SHALL NOT WEARY
THEM
NOR THE YEARS CONDEMN."*

East Gippsland Fire Recovery Projects

Come along for afternoon tea and to discuss how your community could benefit from the fire recovery projects.

- Adaptation for Recovery in Bushfire Affected Communities
- SNAP East Gippsland Mental Health Initiative
- Creative Arts Recovery & Creative Tourism Streetscapes
- East Gippsland Building Community Resilience – Resilient Community Program

Bonang Hall	Sunday April 19th	1pm – 3pm	Afternoon tea supplied
Bendoc Hall	Monday April 20th	1pm – 3pm	Afternoon tea supplied RSVP Rita Barnes 02 64581222
Goongerah Hall	Sunday April 26th	1pm – 3pm	Afternoon tea supplied RSVP Amy Livett 5154 0118

Communities now have the opportunity to use specific project resources and funding to build and support stronger and more resilient communities. The projects focus on emergency planning, community issues, mental health and art. For example, the Creative Tourism Streetscapes project is about communities creating a practical structure with flare that benefits the community. Tubbut, Bonang, Goongerah & Bendoc communities each have access to \$10k for their Streetscape project.

These projects are supported by Department of Health and Human Services, East Gippsland Shire Council, Orbost Regional Health, Regional Arts Victoria, Regional Development Victoria, East Gippsland Network of Neighbourhood Houses and SNAP.

Further information, please contact:

Lorelee Cockerill—Community Recovery Facilitator, Orbost Regional Health.
P: 03 5154 6703 M: 0427 850 457 (Tuesday & Wednesday)
Birgit Schaedler—SNAP Co-Coordinator
P: 1300 737 412 M: 0438 010 312
Andrea Lane—Creative Arts Recovery Facilitator
P: 03 5156 5375 M: 0428 984 682 (Mon, Tue & Wed)

McKillops Bridge Now Open



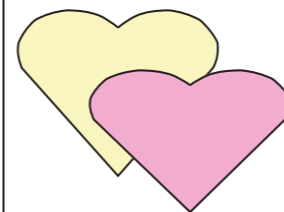
We have been advised that as at the 1st of April 2015 the works at McKillop's bridge have been completed and its business as usual on the road through from Deddick to Wulgulmerang.

Biggest Morning Tea

Thursday 28th May

10am here at the Centre

Please bring a plate of something sweet to have with our cuppa's and join us in a morning focused on beating cancer and raising much needed money to go towards research and aiding those who have been diagnosed!
**Donation box will be located near the sign in book.



A New Nichol!

Corey & Tash Nichol are thrilled to announce the arrival of 'Paige Elsie'

Born on the 28th of February 2015, weighing 6lb4ozs. A little sister for Logan and the third granddaughter and fourth grandchild for Denise and David. Here at the Centre we would like to extend our warmest wishes to the Nichol family on their beautiful little girl!



The Delegate Multi Purpose Service

Wellness Clinic – Delegate MPS

This is a clinic where people come in for procedures or assessments by nursing staff.

This includes:

Wound care

Blood pressure readings

Blood sugar readings

Non-urgent ECG

Suture or clip removal

Other procedures that do not require a Doctor.

Wellness Clinic is held on the following days and times

Monday 9.00am – 10.30am

Tuesday 9.00am – 10.00am

Thursday 9.00am – 10.30am

Friday 9.00am – 10.30am

No appointment necessary. Closed Public Holidays.

The Delegate MPS will still be open as per usual, so if you have a health concern please come over and be assessed by the nursing staff.



BENDOC WHEEL

bendocpa@bigpond.com

Competition Time

Inspirational Rural Mums

To coincide with Mothers Day this year we are having a competition for our 'Mums' of the area!

The theme will be 'Inspirational Rural Mums' and we want you to tell us in 25 words or less about someone you know who fits this criteria!

A lovely lady I know by the name of Margareta Osborn has kindly donated a signed copy of her new book 'Rose River', a matching bookmark, a branded wine glass and some chocolates! (Pictured—case not included)

Winner will be announced in the June wheel. Entries close on the 20th of May.

All entries to either 19 Dowling Street Bendoc, bendocpa@bigpond.com or in person at the centre!



WHATS INSIDE

Anzac Day 2015

Biggest Morning Tea

A Baby Girl!!!!

Monthly Recipes

Just For Fun

1080 Baiting Program

Chinese Tunnel Photos



Community Billboard

LIBRARY VAN. The Library Van will be visiting as per schedule as normal. New members are always welcome. Don't forget that you are able to sign up to be a member or return books via the Bendoc Resource Centre. The Centre also has a range of books that can be borrowed direct anytime the Centre is open. These books are changed regularly for your enjoyment.

BENDOC FISHING CLUB. Our next comp will be the saltwater comp held on the weekend of the 17th and 18th of April at Mallacoota.

BENDOC CRAFT GROUP. The Craft Group will be meeting on Tuesday the 14th of April here at the centre, starting at 10am. There is not a restriction on what type of craft you can bring— perhaps a UFO (Unfinished object) or how many friends, just come along and socialise while enjoying what you love doing. (BYO Lunch).

BENDOC BUS The Merimbula Bus will be running the second Friday of every month . Phone Claire on 6458 1433 or Nola on 6458 3285

Firearms Safety Course



We are hoping to hold a Firearms Safety Course here at the Centre in either July or August and are calling for expressions of interest.

We will need at least 10 people to make it viable for the Firearms' Officer to come to Bendoc to host the night so please let us know if you would be interested so that I can organise this as soon as Possible—Simone

For Further Information Phone Bendoc Resource Centre 64 58 1402
TUESDAY—9.30am-3pm WEDNESDAY—10am-2pm THURSDAY — 9.30am-3pm
Email.... bendocpa@bigpond.com

BENDOC RESOURCE CENTRE IS YOUR CENTRE.. Come in for a cuppa!

RESOURCE CENTRE

9.30am - 3.00pm

Tue-Wed-Thu

Bendocpa@bigpond.com