

# Bendoc Wheel

bendocpa@bigpond.com or 04 1267 5253

Hi everyone, I hope you all received some lovely rain and weren't washed away by floods. It's nice to see the creeks flowing and the dams full again.

Below are some pictures from the markets held recently in Delegate.

## Opening Hours

9:00- 2:30

Tuesday & Wednesday  
and every other  
Monday

(Subject to change)

Contact us on

02 6458 1402

04 1267 5253

Or

bendocpa@bigpond.com



# AGRICULTURE VICTORIA

## Smarter, safer farms

Smarter, safer farms is a four year initiative which will invest in targeted approaches to:

- keep farmers, workers and families safe and well
- helps farmers make sound business and farm management decisions
- ensure farmers can prepare and be resilient through drought and other impacts of climate change
- support farmers to capture benefits of innovation.

It includes \$10 million of farm safety and wellbeing initiatives to change Victoria's farm safety culture and reduce the number of deaths and injuries on farms. It also includes a \$10 million skills program, which will provide targeted training to build capability in:

- financial literacy
- risk management
- farm planning
- adaptation to climate change.



## Farm Safety Rebate Scheme

### Making our farms safer places to work and live

The Victorian Government has opened the \$3 million Farm Safety Rebate Scheme.

Eligible farm businesses can now apply for a rebate of up to \$5000 to invest in infrastructure and equipment to keep you, your workers, visitors and family safe.

### Program Guidelines

[Farm Safety Rebate Scheme Guidelines \(PDF - 886.7 KB\)](#)

[Farm Safety Rebate Scheme Guidelines \(WORD - 68.4 KB\)](#)

### Find out more and apply

To find out which projects are eligible and to apply contact [Rural Finance](#) <sup>CF</sup> on [1800 260 425](#).

Rebates will cover up to 50 per cent of the costs of the infrastructure and equipment.

The Farm Safety Rebate Scheme will close 31 December 2021 or when all funds are allocated.

[Farm Safety Rebate Scheme](#)

For more information visit

<https://agriculture.vic.gov.au/about/agriculture-in-victoria/smarter-safer-farms>

Or call [1800 260 425](tel:1800260425).



I am looking for 3 people who are passionate about playing cards to learn a new, very **complicated game called 'hand and pony.'** I learnt this game recently while on holiday and have become addicted. A good knowledge of cards is necessary and the game is played with partners.

Anyone interested, please call Marion on 04 1135 9091



---

### Sealing the Bonang



Heading south at the Gap, 1.6km tar done. The tarring of the final stretch of the Bonang Highway. Wednesday 24/03/2021

It's been years in the asking, but the final 11kms of the Bonang Highway has started to be sealed. Your new roving reporter can report, that approximately 1.6km of the dirt immediately North of the Gap intersection and Bonang has been tarred during the past week.

Unnervingly the colour of the tar chips is exactly the same as the old dirt road, so just be careful, until the whole road is completely tarred, also, the new tarred road is a lot wider than the old dirt road, let's hope that they do the whole 11kms that way.

# Dung Beetles

*in East Gippsland*



The Top Soils Project is excited to bring Dr Russ Barrow from Charles Stuart University to "show and tell" all about Dung Beetles in East Gippsland.

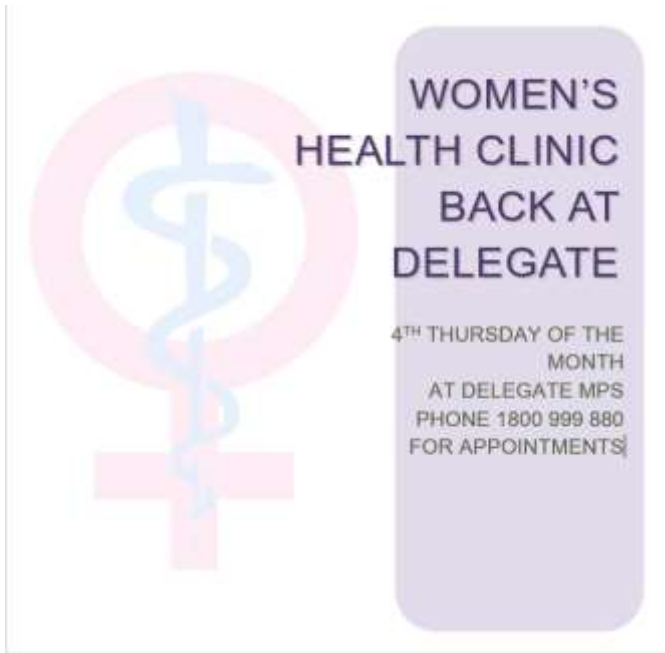
**Friday 26th March 2021**

**Trevaskis Property**  
**239 Trevaskis Rd Wairewa**  
**9:30 am to 11:30 am**

## Workshop topics:

-  Dung Beetles and what they do for our soils
-  Locally found Dung Beetle Species: Specimens caught locally
-  How to trap Dung Beetles to find out what is on your farm
-  How to live capture Dung Beetles and relocate
-  The National Dung Beetle Ecosystem Engineers Project and its activities within East Gippsland





SO, ladies, if you need to speak with a professional in women's health issues and feel more comfortable talking with a female, save yourself a trip to Bombala or further and contact the centralised intake number on the left to make an appointment locally at Delegate!

### Flying Doctor Dentist

The Royal Flying Doctor Dentist is still coming to Bendoc , however they encountered some trouble after their mobile clinic was involved in a road accident. We have been informed that they are still taking bookings but cannot confirm a date. So, if you require a dental appointment please give them a call and we will keep you posted as to the date of their visit.

For bookings call 03 84120444



## The Delegate Multi Purpose Service

**Wellness Clinic – Delegate MPS 02 6459 800**

**Wellness Clinic**

**Monday 9am—10am every week except public holidays. No appointment necessary.**

**Procedures include:**

- Wound care
- Blood pressure reading
- Blood sugar readings
- Suture or clip removal
- Injections with doctor's written order

**Pathology Clinic:**

Wednesday 9:30—10am every weekday, no appointment needed.

**Victorian Visits:**

Community nurse visits with Victorian clients fortnightly. For referral call Orbest Regional Health 03 5154 6666





# Colour & Creativity Workshop

Join Madelaine and Thérèse for a fun afternoon connecting with your creative side. Using acrylic paint on stretched canvas and coloured ink on paper we will explore, create and play.

CatholicCare Victoria's Bushfire Community Recovery Service provides health and wellbeing support to communities across East Gippsland. Art is a fun and joyful activity great for calming the mind and body, developing self-awareness, and cultivating health and wellbeing.

✓ For all ages    ✓ Free workshop    ✓ Lunch provided

<p><b>Bendoc colour and creativity workshop dates – usually first Wednesday of the month</b></p>	<p><b>7 April</b></p>	<p><b>5 May</b>  <b>Visitor:</b>                  Jennie Smith -                  Community                  Partnerships Support,                  Recovery                  DELWP</p>	<p><b>9 June</b>  <b>Visitor:</b>                  David Pace, <b>Red Cross</b></p>
--	-----------------------	---	---

Our first colour and creativity workshop with Artist Madeline provided a refreshing change of pace and was thoroughly enjoyed by all who attended. Madeline began by introducing the colour wheel and progressed to producing an abstract artwork using coloured ink. Many attendees surprised themselves with an artistic side they didn't know they had. Eleni from the Orbost Bushfire Recovery Hub provided a delicious lunch and the weather was kind.

There will be three more workshops of this kind, lunch provided, in the future. See dates above. All welcome, please feel free to come and join in the fun.



## Notices

### Saturday nights at the Bendoc Hall.

The Bendoc Hall committee have been trialling having Community Nights at the Hall, on the first Saturday in the month from 6-8pm.

Covid Restrictions have made it difficult, but seeing that the AFL can now have 75,000 people attending the footy from Thursday night, I think we can get a few more people coming along to join in the fun.

The Community Night is basically just groups playing card games (Euchre etc) Board Games (Rummikube, Scrabble, Chess, Draughts, or bring along your own favourite one).

Or, if you just want to sit and watch, and talk to Jim (good luck with that 😊), you are more than welcome.

The Hall also puts on a wee supper, if you are peckish, after winning your game 😊

We are having the Community Nights at the Bendoc Hall Supper Room (at the back of the hall).

Oh, and yes !! Saturday the 17th April is Film Night in Bendoc. See separate advert in the Wheel. The movie will be RAMS, it's about sheep, so no excuse for the farmers not to turn up 😊.



**COMPUTERS FOR OVER 50S**

Would you like to learn how to send an email, look up a new recipe or type a letter on the computer? Would you like to learn a little about computers and other devices in a safe, supportive, and casual environment with other like-minded people? If so, the Bendoc Resource Centre has enlisted the help of the very knowledgeable and supportive Sharon Buckman to deliver computer training to over 50s.

Fortnightly from 6<sup>th</sup> April  
After lunch  
At the Bendoc Resource Centre  
02 6458 1402 Or 0412675253  
bendocpa@bigpond.com.au

### Weekly Walking Group



The weekly walking group meet every Wednesday morning. If you feel like walking for fitness or fun please come along. If you want to know more, contact us at the Resource Centre - 04 1267 5253



# Regional Travel Voucher Scheme

For more information <https://www.vic.gov.au/regional-travel-voucher-scheme>  
 Register for a \$200 voucher to spend on accommodation, attractions or tours in regional Victoria.

## Who can apply for a voucher?

Victorian residents over the age of 18 are eligible to apply. Each household is limited to one voucher for the entire scheme.

Each voucher gives the recipient the right to claim a reimbursement of \$200 if they have spent at least \$400 on accommodation, experiences, tours or attractions for a minimum 2 nights in paid accommodation in regional Victoria, the Yarra and Dandenong Ranges or the Mornington Peninsula.

Applicants must provide evidence they have spent \$400 or more in the following categories:

## Farming Families Break

Gippsland Lakes Complete Health has partnered with East Gippsland Shire Council to deliver a program that enables farming families, from across East Gippsland, to take a break from the farm and enjoy an expenses-paid weekend together, which is filled with fun activities.

Funded by Rural and Regional Victoria, these weekend packages are being held over a five-month period between February and June 2021. Recharge: Weekend Getaways for Farming Families are available to any farmer with a PIC (property identification code) and who has been fire or drought-affected in recent times.

Expressions of Interest are now being taken and will be processed on a first-in, first-served basis. For full details contact Tricia by phoning 0419 904 678 or emailing [triciah@glch.org.au](mailto:triciah@glch.org.au)

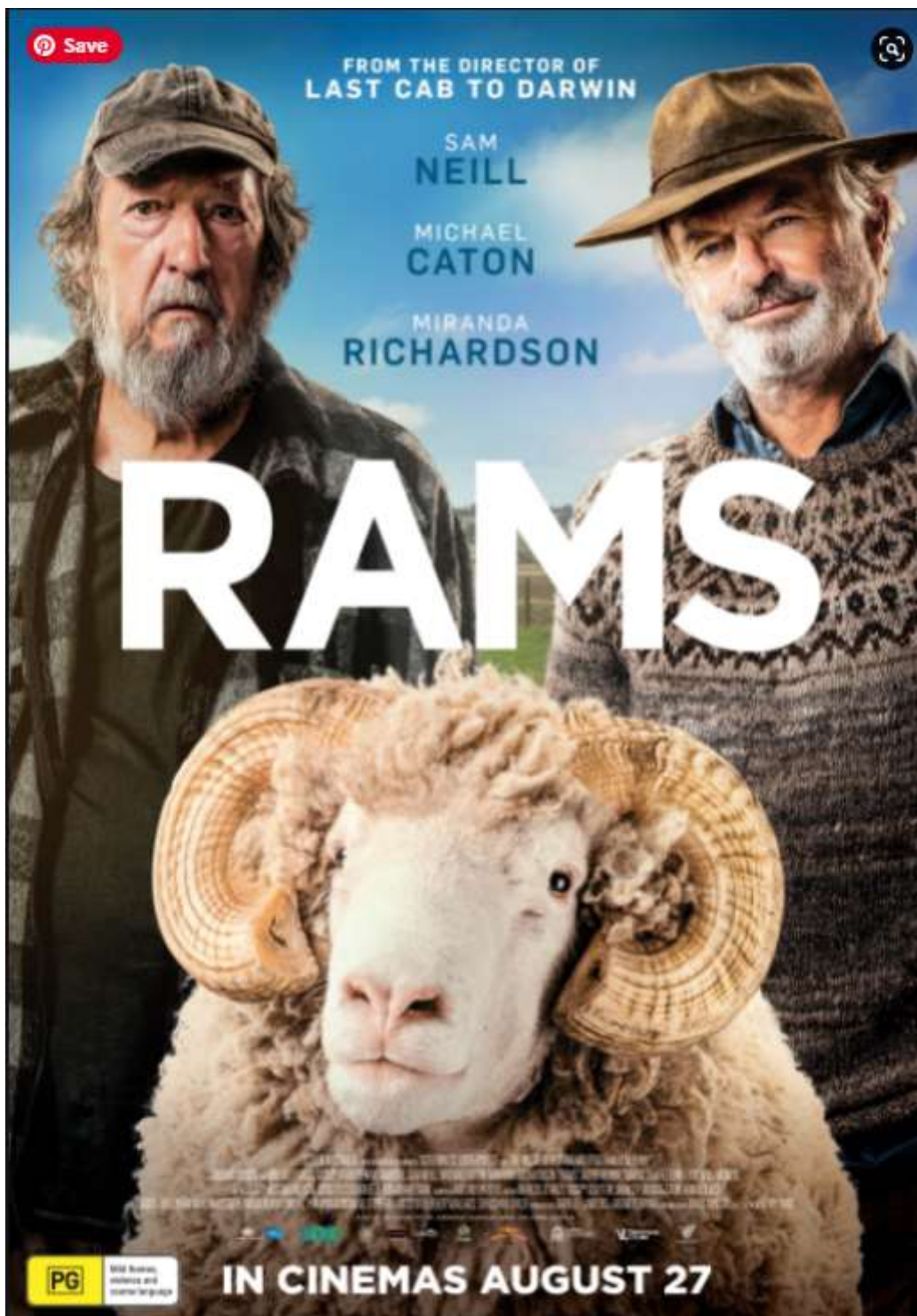
[Giving Farming Families a Chance to Recharge | Gippsland Lakes Complete Health \(glch.org.au\)](https://www.glch.org.au/giving-farming-families-a-chance-to-recharge)

LAKES ENTRANCE RECHARGE FAMILY PACKAGES 26 / 27 February 2021	LAKES ENTRANCE RECHARGE FAMILY PACKAGES 19 / 20 March 2021	PAYNESVILLE RECHARGE FAMILY PACKAGES 30 April / 1 May 2021	BUCHAN RECHARGE FAMILY PACKAGES 14 / 15 May 2021	METUNG RECHARGE FAMILY PACKAGES 4 / 5 June 2021
<b>FAMILY FUN PACKAGES</b>	<b>FAMILY FUN PACKAGES</b>	<b>ENJOY PAYNESVILLE</b>	<b>EXPLORE BUCHAN</b>	<b>FAMILY FUN OUT OF THE SUN</b>
Two night's accommodation with Breakfast hamper	Two night's accommodation with Breakfast hamper	Two night's accommodation with Breakfast hamper	Two night's accommodation with Breakfast hamper	Two night's accommodation with Breakfast hamper
Three lunches and two dinners	Three lunches and two dinners	Three lunches and two dinners	Three lunches and two dinners	Three lunches and two dinners
Activities (pending COVID 19 restrictions): Feel Metung Lunch Cruise Minigolf Lakes Entrance Cinema	Activities (pending COVID 19 restrictions): Feel Metung Lunch Cruise Minigolf Lakes Entrance Cinema	Activities (pending COVID 19 restrictions): East Gippsland Variety Tours Winery & Brewery Tour Movies Sun Cinema Paynesville Maritime Museum	Activities (pending COVID 19 restrictions): East Gippsland Variety Tours Winery & Brewery Tour Karoonda Park Adventure including Zip Lining/ abseiling Cave tours	Activities (pending COVID 19 restrictions): Eliwera Nautic - Boat charter or East Gippsland Variety Tours Winery & Brewery Tour Movies Sun Cinema
Other attractions to do at own cost: SeaShell Museum, Segway adventures, Venture Out paddling, kayaking or bike riding, or paddleboats while you are in Lakes.	Other attractions to do at own cost: SeaShell Museum, Segway adventures, Venture Out paddling, kayaking or bike riding, or paddleboats while you are in Lakes.	Other attractions: Paynesville Ferry (free if you are walking), Raymond Island Ramble, Kuala Walk, Raymond Island Ride the Kuala (at own cost).	Other attractions that can be enjoyed, walks in the caves reserve, swim in the Snowy, Basin Creek Falls, McKillop's Bridge.	Families can book and enjoy, at their own cost many more attractions in Lakes Entrance: Sea Shell Museum, Segway adventures, Venture Out paddling, kayaking or bike riding, or paddleboats.
Fuel voucher for \$100	Fuel voucher for \$100	Fuel voucher for \$100	Fuel voucher for \$100	Fuel voucher for \$100



**Sun Bus—Movies at Bendoc.**

The Sun Bus is a double decker bus with a screen fit out on the side so when you're thinking about a location/venue, think double decker bus and people sitting on their picnic rugs! There will even be choc tops and popcorn for the kids (big and small).



**BENDOC**

**Date: Saturday, April 17**

**Location: Bendoc Community Hall**

**Film: RAMS**

**Start time: 6:00pm**

**BYO: Picnic Rug / Seating**

**The Sun Bus also comes with choc tops and popcorn!**

## CHANGING RESTRICTIONS IN VICTORIA

Subject to public health advice, there are changes to restrictions for all Victorians **from 6.00pm on Friday, 26 March 2021.**

### Social gatherings

- You may have **up to 100 people** visit your home per day, not including children under 12 months of age. This includes your front and backyards.
- **Up to 200 people** can meet in a public outdoor place.

### Return to offices

- **Up to 100 per cent** of workers can return to their offices in both the private and public sectors.
- The maximum density limit for workers in all offices is **1 person per 2 square metres.**

### Face masks

- You **do not** need to wear a mask in retail environments

You must **carry a face mask with you at all times.**

You must wear a mask when on public transport, in rideshares and taxis, and visiting or working in a hospital or care facility.

If you have a **lawful exemption** for not wearing a face mask (e.g. a relevant medical condition), you do not have to wear a face mask.

For more information, visit [www.coronavirus.vic.gov.au](http://www.coronavirus.vic.gov.au).

2021		April				
MONDAY	TUESDAY	WEDNESDAY	THURSDAY	FRIDAY	SATURDAY	SUNDAY
29	30	31	01	02	03	04
05	06 Open 9- 2:30	07 Open 9- 2:30 Colour workshop and lunch at the BendocHall	08	09	10	11
12 Open 9- 2:30	13 Open 9- 2:30	14 Open 9- 2:30	15	16	17	18
19	20 Open 9- 2:30	21 Open 9- 2:30	22	23	24	25
26 Open 9- 2:30	27 Open 9- 2:30	28 Open 9- 2:30	29	30	01	02
03	04	Notes:				