

Bendoc Wheel

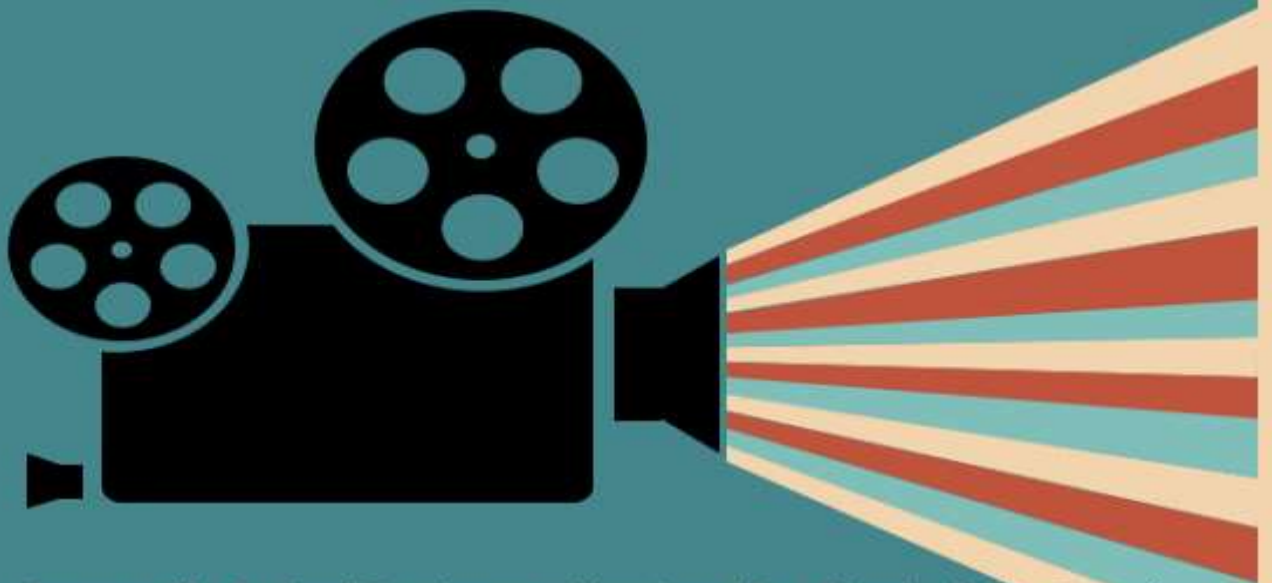


BENDOC MOVIE NIGHT

Bendoc Memorial Hall

NOVEMBER 26th, 2022

· BBQ dinner @ 6PM · Movie starts @ 7:30
Popcorn, ice-creams, and soft drinks provided
BYO alcohol



Sponsored by Regional Development Victoria and East Gippsland Shire Council

All proceeds benefit future programming



Bendoc Memorial Hall





Thank you Bendoc Hotel

The Bendoc Progress Association and Neighbourhood House would like to sincerely thank John and Caroline from the Bendoc Hotel for their generous donation. The new publicans donated \$375 from their very popular and successful Thursday meat raffle to us as well as contributions to other Bendoc community organisations. We will ensure this money goes toward events or services that benefit the Bendoc community.



Above: Very successful Melbourne Cup celebration day.
Right: The new publicans, John and Caroline.



Neighbourhood House facilities upgrade

Bendoc Neighbourhood House is thrilled to announce that we have been included in funding received by Deddick Valleys Isolated communities group. We want to thank Eleni from Warm Corners Consulting for her expertise in obtaining this grant.

MEDIA RELEASE

12 October 2022

FUNDING TO SUPPORT DEDDICK VALLEY ISOLATED COMMUNITY GROUP WITH ESTABLISHING A NETWORK OF SERVICE HUBS

The Andrews Labor Government is continuing to support Deddick Valley Isolated Community Group with the infrastructure and services it needs to grow and thrive.

Minister for Suburban Development Melissa Horne, Minister for Regional Development Harriet Shing and the Member for Eastern Victoria, Tom McIntosh today announced \$193,943 to establish a network of Service Hubs across the Errinundra to Snowy district through the Labor Government's *Living Local Fund*.

This fund will help improve virtual connectivity for community members and provide consulting rooms for visiting services. Service Hubs will also enhance liveability and accessibility, revitalise the communities and support their development, improvement and promotion by removing access barriers.

More than 400 projects across the state will be supported through the Fund, with \$15 million available for suburban projects and another \$5 million for the regions.

Local councils and community organisations have received grants of up to \$200,000 for upgrades to shopping strips, playgrounds, community gardens and public art projects, or to buy new equipment or carry out minor refurbishment works.

From playground upgrades in Pakenham to the creation of an Aboriginal community art gallery in Ballarat, the Living Local Fund is supporting a wealth of diverse and important locally led projects right across Victoria.

The Living Local Fund is part of the Government's *Our Suburbs: Living Local* and *Our Regions: Living Local* Initiatives.

For more information visit www.suburbandevlopment.vic.gov.au/living-local or www.rdv.vic.gov.au/living-local.

Quotes attributable for the Member for Eastern Victoria, Tom McIntosh MP

"The Government is supporting Deddick Valley Isolated Community Group with establishing a network of service hubs because we know the community deserves better connectivity and to be able to access services locally."



Tom McIntosh MP

STATE MEMBER FOR
EASTERN VICTORIA REGION

Unit 1, 23 James Street, Pakenham VIC 3810
(03) 5940 5010 [TomMcIntoshMP](https://www.facebook.com/TomMcIntoshMP)



PROJECT UPDATE 8

Building Healthy & Resilient Communities through Service Equity

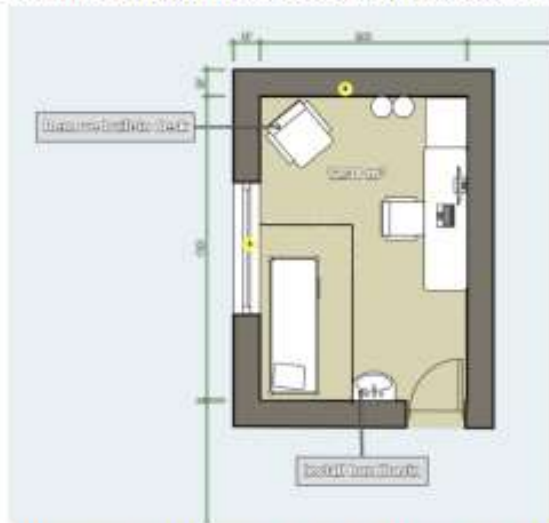


About the project

Since February 2022 we've been letting you know about funding received for Stage 1 of this project. The project is now focussed on delivering Stage 2 - delivery of Service Hubs across the district, and funding for Stage 3 - to employ a community nurse/care coordinator. If you need more information you can refer to past updates or get in contact with Eleni:

hello@warmcornersconsulting.com

Stage 2: The Deddick Valley Isolated Community Group is set to receive \$193,943 from the Labor Government's *Living Local Fund*. The funds will establish 'Service Hubs' in Bendoc Neighbourhood House, and in the ex-school buildings in Tubbut and Goongerah.



Images: Example layout of the Bendoc Service Hub.

Converting these existing, under-utilised, rooms into private consulting rooms will improve service provision across the district. The rooms will be bookable by visiting services to see clients and patients face-to-face, or booked by community members who want access to high-speed internet to participate in virtual health and telehealth appointments.

As part of the project, Bendoc Neighbourhood House will also be receiving an upgrade, converting their current internal drop toilet to a septic toilet.

In Bonang, the laundry/shower extension to the public bathroom building will be progressed, and installation of a commercial coin/card-operated washer-dryer is planned.

Stage 3: The Errinundra to Snowy Community Recovery Committee wrote a letter to the Minister for Health requesting Stage 3 funding for a community nurse. Other funding opportunities are being explored.

Project (Stage 1) funded by:



EAST GIPPSLAND
Community
Foundation



FRRR
Foundation for Rural
Regional Renewal

The poster for the STAY East Gippsland Accommodation EXPO is set against a light green background. At the top left, the word "STAY" is written in large, bold, white letters. Below it, the text "East Gippsland Accommodation EXPO" is displayed. The date and location, "Wednesday 16th November" and "Buchan Hall, Buchan, Victoria", are listed. A note states "Tickets at Eventbrite and Bookings are essential." and a Facebook icon is shown with the text "*STAY* on Facebook". To the right is a photograph of a modern, illuminated wooden cabin with a gabled roof, situated on a wooden deck overlooking a body of water. Below the main title, there are two columns of text. The left column, titled "ABOUT", describes the event's focus on the accommodation industry and features speakers and exhibitors discussing various models. The right column, titled "AGENDA", lists several topics and speakers, including "Planning Presentation - Crowther Sadler and East Gippsland Shire", "Cameron Crispin - HANDED Ltd pods", "Jen Clarke - 'Hosting with Heart' podcast", "Jen Kellink, Author - How to be an Air B&B Rockstar", "Ian Riley - Big Tiny Homes", "Marketing for the Accommodation Industry - Destination Gippsland", and "Pre-fab exhibitors". At the bottom left is a photograph of a wooden cabin with a deck and a table. At the bottom right are the logos for "East Gippsland Shire" and "VICTORIA State Government".

STAY is an opportunity for people with an interest in regional accommodation development and existing regional operators to connect and get up to speed with the latest knowledge in the industry.

This event is particularly relevant for people in agriculture who want to diversify their income streams and engage in agri-tourism.

“Many operators have endured a great deal and we want to give them access to services and information that would normally require travelling out of the area or spending a long time researching,” Mayor Cr Mark Reeves said.

The event will provide useful information for people at any stage of their accommodation business journey – from first steps and planning right through to pre fab accommodation options and how to present the perfect B&B.

Speakers include Richard Hoxley from Crowther & Sadler - Town and Regional Planning, Ian Riley from pre fab accommodation company BigTiny Homes and Jen Clark from the “Hosting with Heart” podcast, just to name a few.

Attendees can also talk to a range of exhibitors throughout the day

A networking dinner will be held at the Buchan Caves Hotel in the early evening with an Astro Tourism experience to take place as the stars come out and if weather permits.

Tickets for the daytime EXPO event are \$30.00 and the separate evening activities are \$40.00 and available via Eventbrite, numbers are capped.

[STAY - The East Gippsland Accommodation EXPO Tickets, Wed 16/11/2022 at 9:30 am | Eventbrite](https://www.eventbrite.com/e/stay-east-gippsland-accommodation-expo-tickets-wed-16-11-2022-at-9-30-am)

For more information on presenters and exhibitors, check out the STAY Facebook page : <https://www.facebook.com/groups/3244944172451335/>

Cross-border issues

Last week the Bendoc Progress association and members of the Community joined an online meeting with Victorian Cross-Border Commissioner, Luke Wilson to discuss some developments in ongoing cross-border issues.

- Policing remains a priority and the group discussed the fact that it has been 7 months since the meeting between Vic Police and the Bendoc community and we have still not received the formal response from Victoria Police that we were promised. A plan is in place to follow this up.
- Victorian school buses - The Victorian Government now require students travelling to school in our area to be registered on the School Bus Management System. This is an online process. Anyone wanting help with this system is encouraged to contact us at the Bendoc Resource Centre for assistance.



- We discussed the opportunity for offering a Vic Roads service at Bendoc. Work in this area continues.
- Another issue raised was health and the difficulties faced by the Delegate Multi Purpose Centre, in particular the challenge of finding enough staff to fill each roster period. Commissioner Wilson highlighted the Victorian Government's free nursing and midwifery study policy. This initiative has been updated to enable nurses in border regions access study across the border. The Health Dept has advised that it has extended coverage to include study at Uni of Wollongong at Bega, as well as Mount Gambier and Albury. There are some other criteria but at this stage, a student will be considered a Victorian domestic student if they meet the aforementioned criteria, reside in Victoria or a border community and attend a university or TAFE with a campus located in Victoria or a border community. Please see link for further details
- <https://www.health.vic.gov.au/nursing-and-midwifery/free-nursing-and-midwifery-study>.





Our vision

Trusted as the leading humanitarian organisation making a genuine difference in the lives of people and communities.

Our purpose

Bringing people and communities together in times of need and building on community strengths. We do this by mobilising the power of humanity.

Our Fundamental Principles

Humanity, Impartiality, Neutrality, Independence, Voluntary Service, Unity, Universality

Our Values

We Respect As humanitarians, we just should find, listening to, understanding and respecting

We aspire We set our vision, objectives and we lead, because we want to do and be better

We collaborate We achieve our best by bringing people together on shared goals.

We stand up We face challenges and opportunities with courage and competence.

We deliver We take ownership of delivering on our goals and create genuine impact.



Job Opportunity
See Bendoc Neighbourhood House Facebook page for more details.

Position Description

Position Title	Recovery Officer	Department	Emergency Services
Location	Various	Direct/Indirect Reports	Nil
Reports to	State Lead, Recovery & Preparedness	Date Revised	April 2022
Industrial Award	Social, Community, Home Care and Disability Services Industry		
Award Level	4	Red Cross Job Grade	4
Job Level	Team Member	Job Evaluation No.	HRC0071711
Special Measures			

Position Summary

The Recovery Officer will be embedded in the local government area to identify and collaborate with local stakeholders, networks, and key vulnerable groups. The Recovery Officer, will have a strong focus on community engagement, implementing sustainable and effective community disaster recovery and preparedness initiatives aimed to increase community capacity to support a strong, positive recovery and to better prepare for future disaster events. This role requires a motivated and proactive person who has community engagement experience, excellent networking, and time management skills. Also important for this role are excellent facilitation and training skills and an ability to operate in complex and changing environment.

Position Duties

Key responsibilities/accountabilities

- Actively engage with local community groups, agencies, organisations and local government to understand need, seek ways to support recovery communication, community connection and ensure connection between local volunteers and Red Cross programs
- Provide recovery guidance, support and advice to community groups, local organisations and local council on best practice recovery and preparedness initiatives as well as linking the community to the right recovery resources, external advice, and information
- Deliver psychosocial support, recovery, and preparedness education, training, and workshops to support community members
- Provide training, development and support to local volunteers ensuring our ongoing capacity to provide preparedness, response, recovery, and psychosocial support to the community
- Deliver locally appropriate psychosocial support, recovery, and preparedness initiatives and support at community events and anniversaries where needed
- Conduct needs assessments to ensure recovery activities are meeting the needs of affected communities
- Monitor and record program deliverables and outcomes for the program to be effectively evaluated
- Promote a proactive approach to the management of WHS issues and ensure implementation of the Red Cross WHS plan/strategy
- In accordance with Red Cross policy and legislation ensure the effective management and resolution of client and volunteer issues, grievances and complaints Coordinate and implement a range of relevant, high quality, contemporary National frameworks, resources, and materials to drive best practice across service delivery and workforce management

CFA News

- 3rd December CFA Christmas party @ Bendoc CFA shed. Evening BBQ
- The First Aid course recently held by CFA was a well-attended and successful event.

Collaboration between the Bendoc Hotel and the Bendoc Neighbourhood House

We would like to form a small committee to arrange and hold a Ball at Bendoc. Anyone interested in being a part of this event, please contact the Neighbourhood House.



Working dog training with Gary White is going ahead on the 13th December at the Delegate Showgrounds. The event is fully booked but those wishing to come along and spectate are very welcome. Please let us know if you will be joining us to help with catering. Morning tea, lunch, and afternoon tea will be provided.

2022		November				
MONDAY	TUESDAY	WEDNESDAY	THURSDAY	FRIDAY	SATURDAY	SUNDAY
31	01 Open 9-2:30	02 Open 9-2:30	03	04	05	06
07	08 Open 9-2:30	09 Open 9-2:30	10	11	12	13
14 Open 9-2:30	15 Open 9-2:30	16 Open 9-2:30	17	18	19	20
21	22 Open 9-2:30	23 Open 9-2:30	24	25	26 Bendoc Movie night & BBQ 6pm start	27
28 Open 9-2:30	29 Open 9-2:30	30 Open 9-2:30	01	02	03	04
05	06	Notes:				